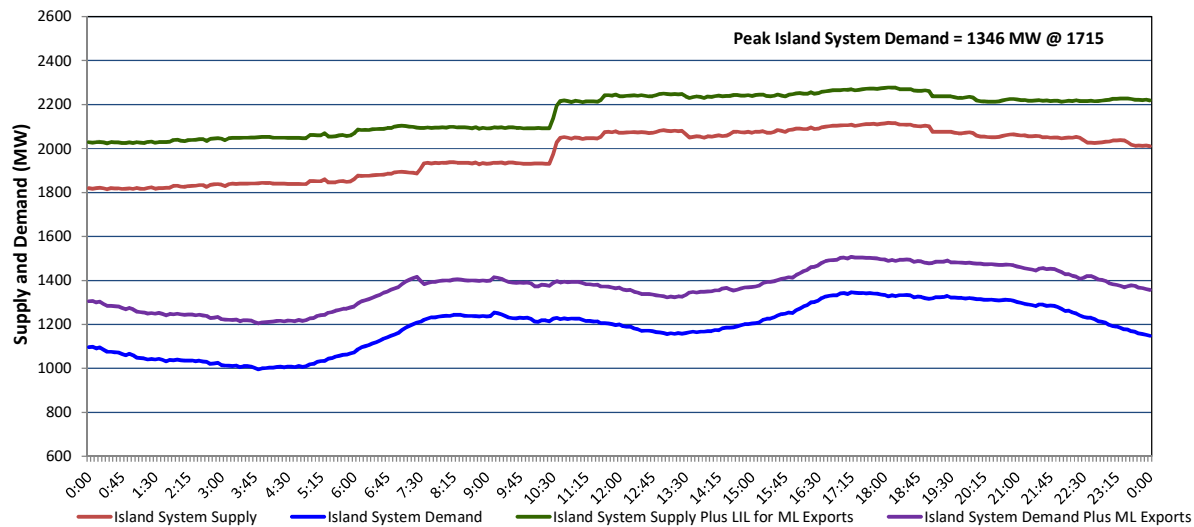


Newfoundland Labrador Hydro (NLH)
Supply and Demand Status Report Filed Wednesday, December 17, 2025

Section 1
Island Interconnected System - Supply, Demand & Exports
Actual 24 Hour System Performance For Tuesday, December 16, 2025



Island Supply Notes For December 16, 2025

- A** As of 0800 hours, March 30, 2025, Holyrood Unit 3 unavailable due to planned outage 130 MW (150 MW).
B As of 0823 hours, March 31, 2025, Bay d'Espoir Unit 1 unavailable due to planned outage (76.5 MW).
C As of 0823 hours, March 31, 2025, Bay d'Espoir Unit 2 unavailable due to planned outage (76.5 MW).
D As of 1400 hours, November 04, 2025, St. Anthony Diesel Plant available at 7.7 MW due to forced derating (9.7 MW).
E As of 0600 hours, December 03, 2025, Holyrood Unit 1 available at 163 MW due to forced derating (170 MW).

Section 2
Island Interconnected System - Supply, Demand & Outlook

Wed, Dec 17, 2025	Island System Outlook ²	Seven-Day Forecast	Island System Daily Peak Demand (MW)	
			Forecast ⁸	Adjusted ⁶
Island System Supply: ⁴ NLH Island Generation: ^{3,7} NLH Island Power Purchases: ⁵ NP and CBPP Owned Generation: LIL/ML Net Imports to Island: ⁹	1,847 MW	Wednesday, December 17, 2025	1,380	1,284
	1,210 MW	Thursday, December 18, 2025	1,295	1,200
	85 MW	Friday, December 19, 2025	1,260	1,165
	190 MW	Saturday, December 20, 2025	1,120	1,027
	362 MW	Sunday, December 21, 2025	1,300	1,205
		Monday, December 22, 2025	1,295	1,200
7-Day Island Peak Demand Forecast:	1,385 MW	Tuesday, December 23, 2025	1,385	1,289

Island Supply Notes For December 17, 2025

F At 0523 hours, December 17, 2025, Holyrood Unit 2 unavailable due to forced outage (170 MW).

- Notes:
1. Generation outages for running and corrective maintenance are included. These are not unusual for power system operations. They generally do not impact customer supply. Hydro schedules outages to system equipment whenever possible to coincide with periods when customer demands are low and sufficient supply reserves are available. However, from time to time equipment outages are necessary and reserves may be impacted.
 2. As of 0800 Hours.
 3. Gross continuous unit output.
 4. Gross output from all Island sources (including Note 3).
 5. NLH Island Power Purchases include: ML Imports, Exploits Generation, Rattle Brook, Star Lake, Wind Generation and capacity assistance (when applicable).
 6. Adjusted for interruptible load and the impact of voltage reduction when applicable.
 7. Due to limitations inherent in the design of combustion turbines, the output of combustion turbines may be reduced in the event that ambient temperatures exceed the threshold required for full rated output. This threshold is dependent on the design of each turbine.
 8. Does not include ML Exports.
 9. LIL Import sunk in the Island System. Actual LIL flows will be restricted by various system conditions including, but not limited to, Island Load, ML Exports and Avalon Unit status.

Section 3
Island Peak Demand and Exports Information
Previous Day Actual Peak and Current Day Forecast Peak

Tue, Dec 16, 2025	Island Peak Demand ¹⁰	17:15	1,346 MW
	Exports at Peak		161 MW
	LIL Net Imports to Island		8,686 MWh
Wed, Dec 17, 2025	Forecast Island Peak Demand		1,380 MW

- Notes:
10. Island Demand is supplied by NLH generation and purchases, LIL Imports plus generation owned and operated by Newfoundland Power and Corner Brook Pulp & Paper (Deer Lake Power, DLP).